

## Types of Weaves



Plain



### Plain Weave

The Plain Weave is the most commonly used and simplest wire cloth weave. Each warp wire (wire running-parallel to length of cloth) passes alternately over and under the wires running transversely through the cloth (fill or shoot wires) at 90 degree angles. It has an extremely wide range of applications.

### Dutch Weave

The Dutch Weave is produced by the use of coarse mesh (mesh wire, woven wire mesh, wire mesh basket) in the warp and a fine mesh with relatively smaller wire in the fill. This weave results in greater strength with very fine openings and is primarily used as a filter cloth. The shape and position of the openings aid particle retention and increase filter cake formation.

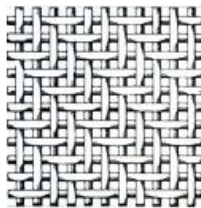


Dutch



### Twilled

The Twilled Weave is produced by passing each fill wire alternately over and under two warp wires. The pattern is staggered on successive warp wires, giving the appearance of parallel diagonal lines. This weave allows the use of proportionately heavier wires in a particular mesh count (number of openings per lineal inch) than is possible in plain weave. This cloth has a wide application capable of supporting greater loads and finer filtrations.

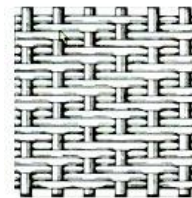


Twilled



### Twilled Dutch

The Twilled Dutch Weave is produced by a combination of the features of the Dutch Weave and Twilled Weave. Fill wires are passed alternately over and under two warp wires forming a fine mesh in one direction and a coarse mesh in the other. This type of weave is capable of supporting greater loads than the Dutch Weave, with finer openings than the Twilled Weave. It is used in applications where the filtering of heavy material is necessary.



Twilled Dutch

